

The Solent CO₂ Pipeline Project Pipeline Corridor Consultation Map Book



01

Introduction

The Solent CO₂ Pipeline Project is seeking permission to install an underground pipeline to transport Carbon Dioxide (CO₂) from the Fawley Manufacturing Complex to a safe, secure and permanent storage location in the English Channel.

The first step is to identify a corridor (typically 500m wide) that we will then take forward to refine to a typically 50m wide route. As the pipeline is to be buried, there will only be a temporary visual impact for the majority of the route, with the exception of a small number of points along the pipeline, where above ground equipment, such as pigging stations, are required.

This map book has been created for our corridor consultation and shows areas of environmental importance across the Solent region that could be included within the proposed corridors.

Further information on the Project, including interactive versions of the maps in this booklet can be found online at www.solentco2pipeline.co.uk.

02

Contents

Overview Consultation Corridors Map

2

Shows the three corridors that we are consulting on.

Overview Watercourses Map

3

Shows all rivers, groundwater source protection zones and flood zones for the three consultation corridors.

Overview Landscape Map

4

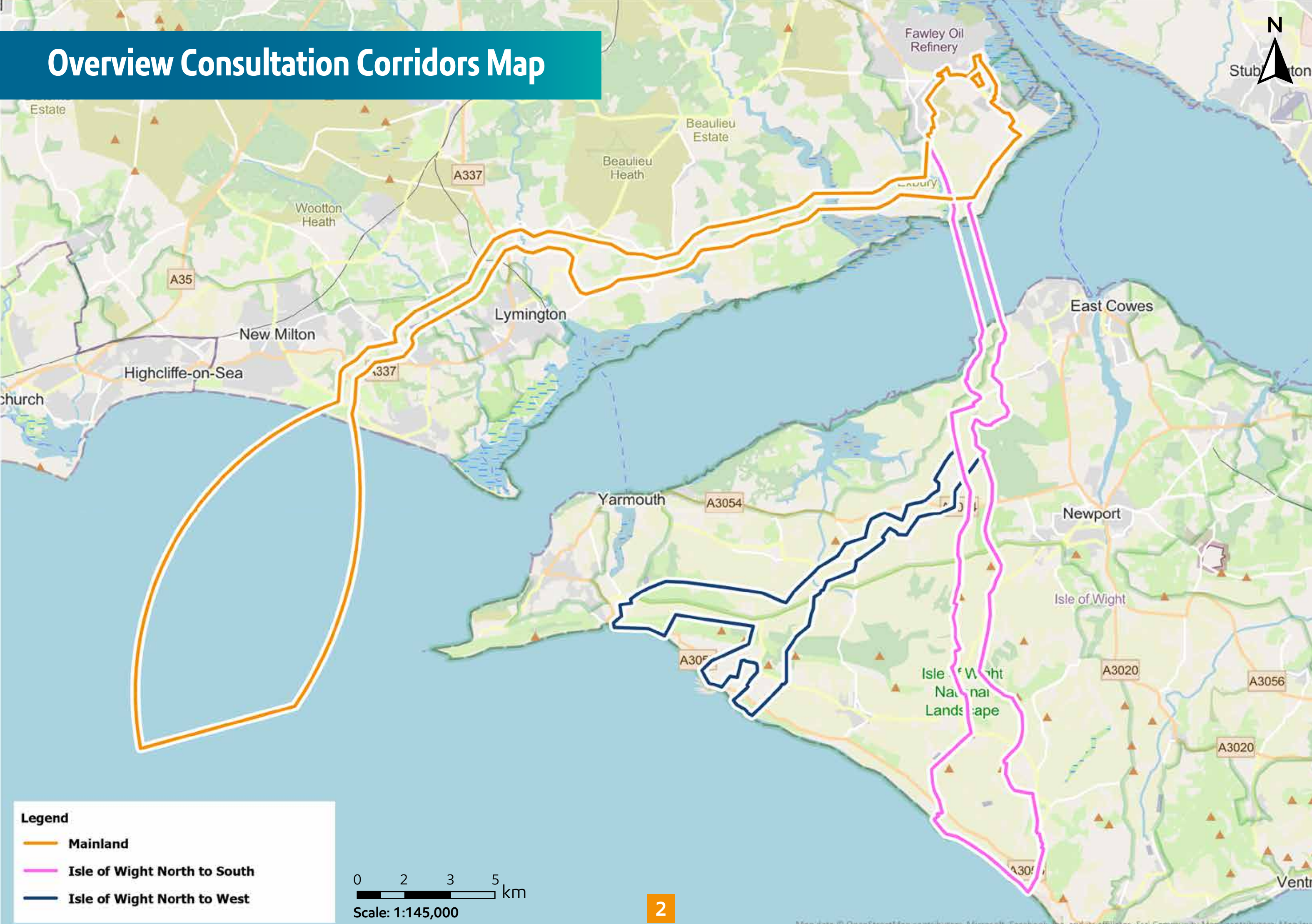
Shows landscape aspects, including National Parks and Areas of Outstanding Natural Beauty (AONB) / National Landscapes for the three consultation corridors.

Area Maps

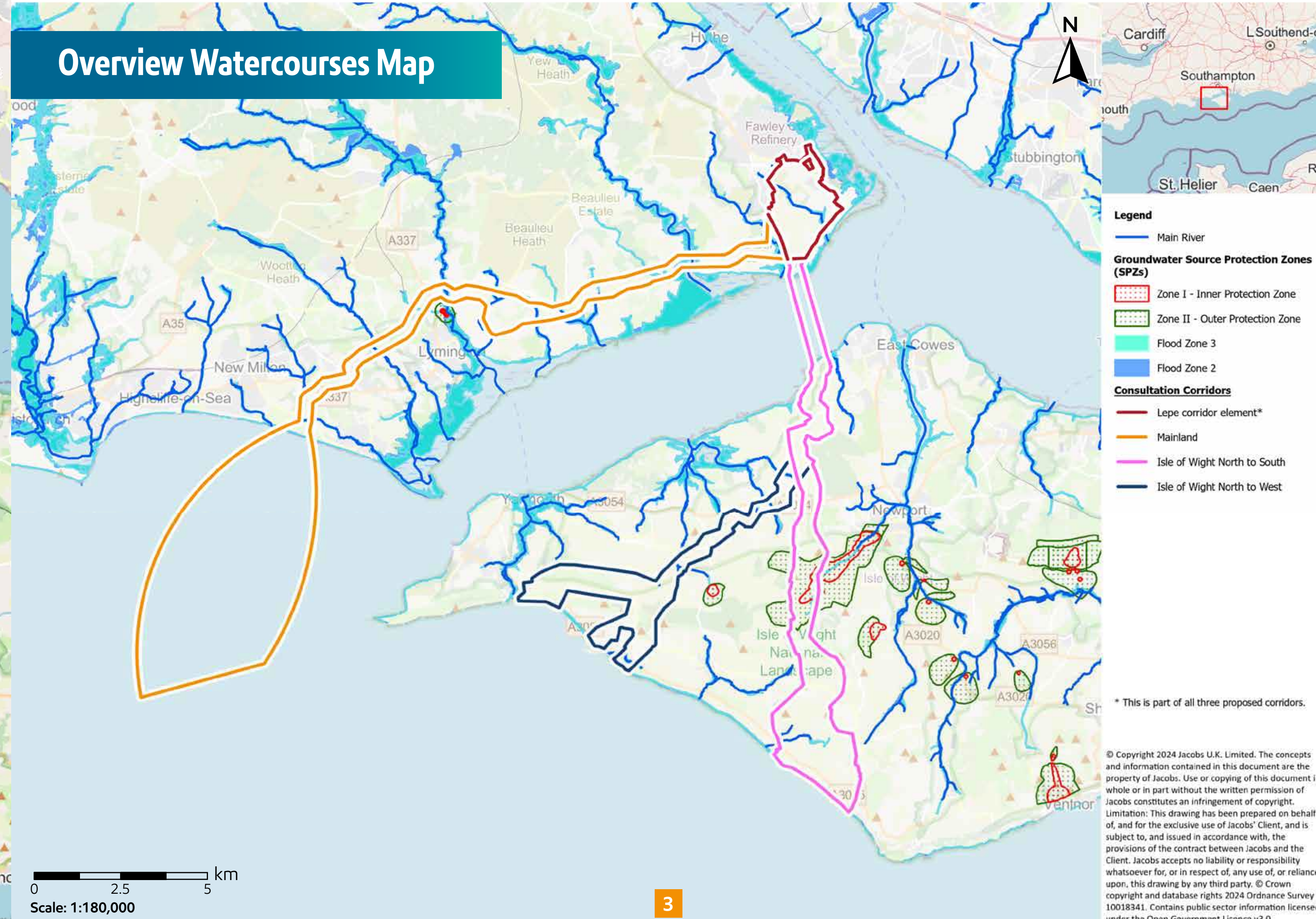
5

Shows each consultation corridor in detailed sections.

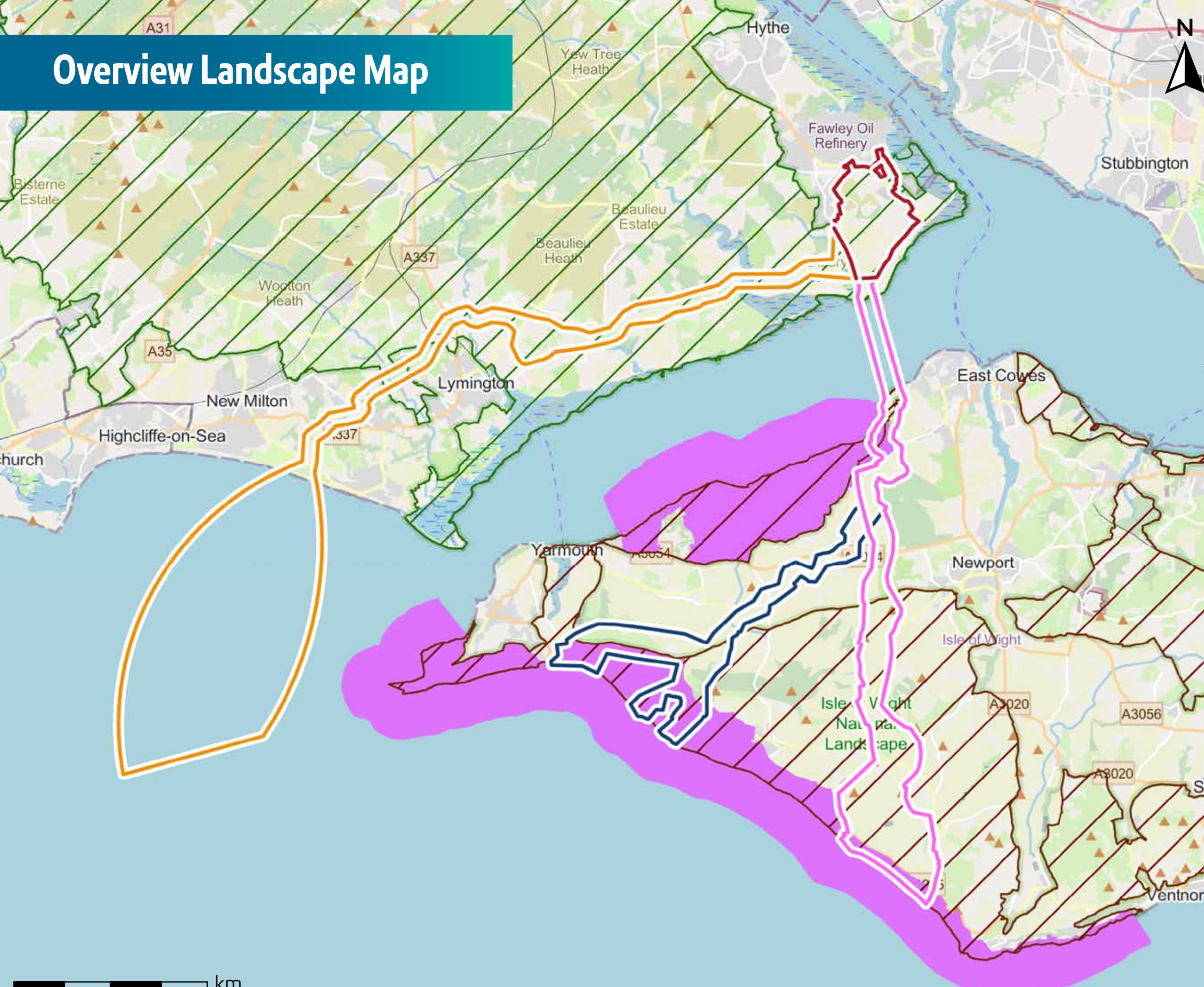
Overview Consultation Corridors Map



Overview Watercourses Map



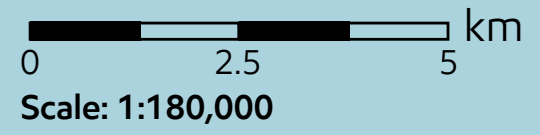
Overview Landscape Map



- Legend**
- National Parks
 - Areas Of Outstanding Natural Beauty/National Landscapes
 - Heritage Coasts
- Consultation Corridors**
- Lepe corridor element*
 - Mainland
 - Isle of Wight North to South
 - Isle of Wight North to West

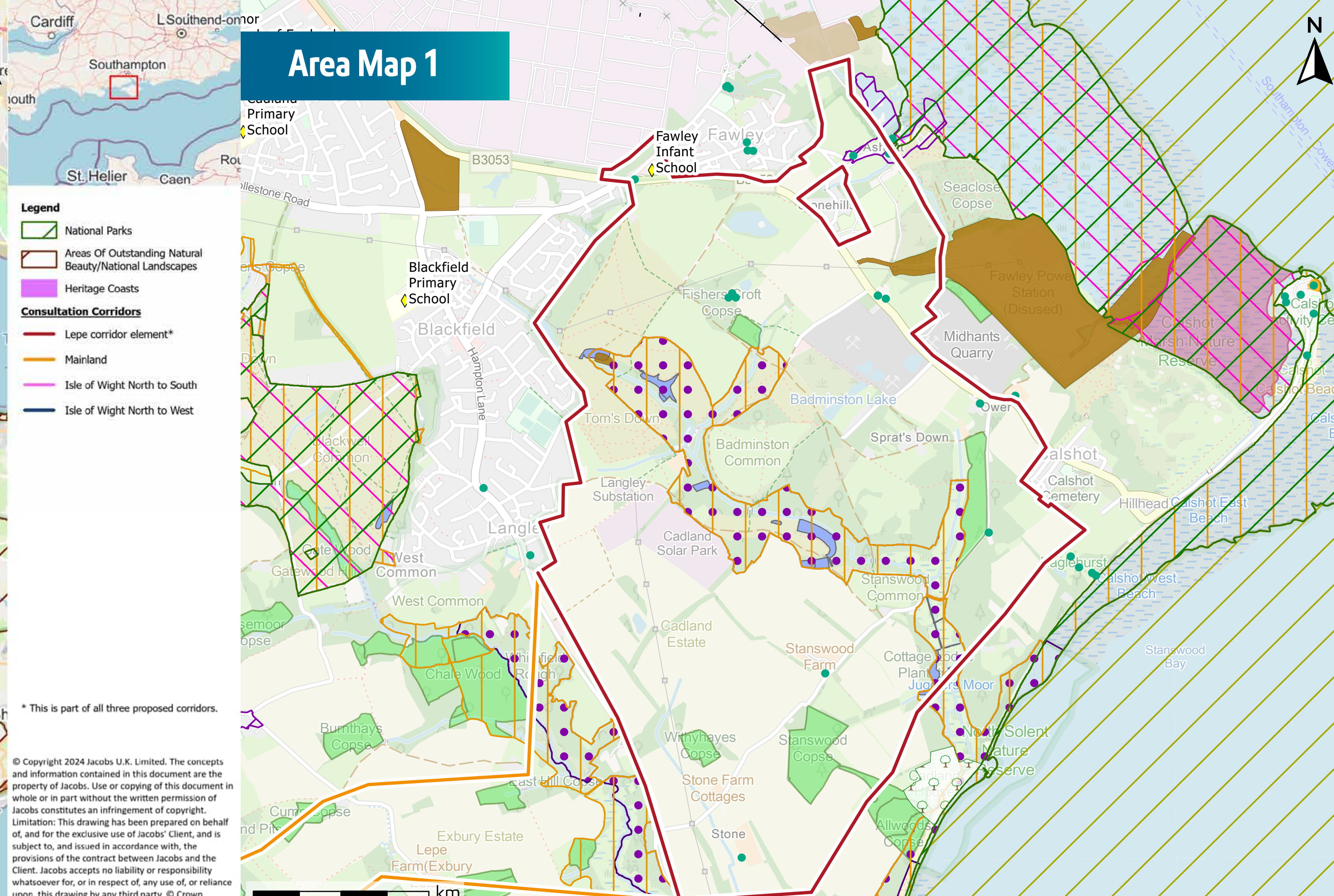
* This is part of all three proposed corridors.

© Copyright 2024 Jacobs U.K. Limited. The concepts and information contained in this document are the property of Jacobs. Use or copying of this document in whole or in part without the written permission of Jacobs constitutes an infringement of copyright. Limitation: This drawing has been prepared on behalf of, and for the exclusive use of Jacobs' Client, and is subject to, and issued in accordance with, the provisions of the contract between Jacobs and the Client. Jacobs accepts no liability or responsibility whatsoever for, or in respect of, any use of, or reliance upon, this drawing by any third party. © Crown copyright and database rights 2024 Ordnance Survey 10018341. Contains public sector information licensed under the Open Government Licence v3.0.



4

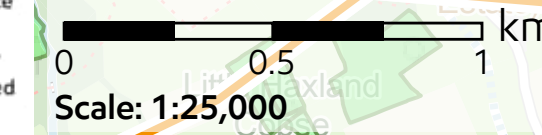
Area Map 1



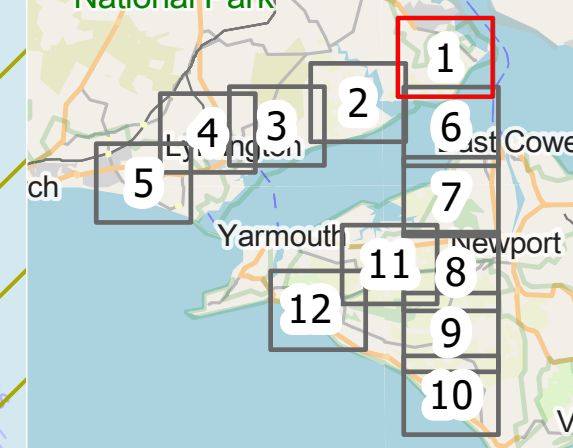
- Legend**
- Education Facility - School
 - Listed Building
 - Railway
 - Scheduled Monuments
 - Registered Parks and Gardens
 - Ramsar Site
 - Conservation Areas
 - Sites of Special Scientific Interest (SSSI)
 - Special Protection Areas (SPA)
 - Special Areas of Conservation (SAC)
 - National Nature Reserve (NNR)
 - Marine Conservation Zones (MCZ)
 - Historic Landfill Sites
 - Permitted Waste Sites
 - Local Nature Reserve (LNR)
 - Ancient Woodland
 - Coastal sand dunes
 - Lowland fens
- Consultation Corridors**
- Lepe corridor element*
 - Mainland
 - Isle of Wight North to West
 - Isle of Wight North to South

* This is part of all three proposed corridors.

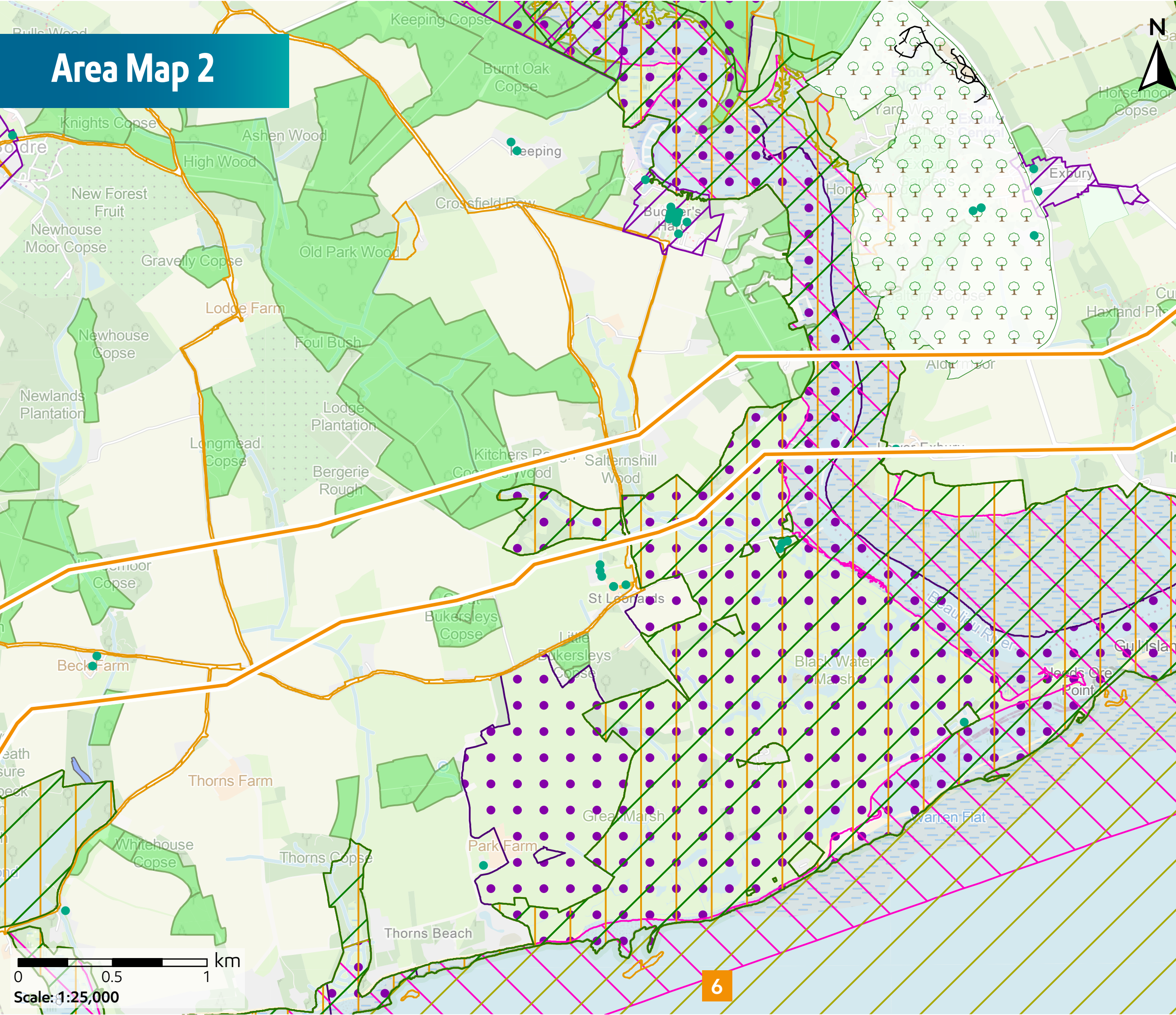
© Copyright 2024 Jacobs U.K. Limited. The concepts and information contained in this document are the property of Jacobs. Use or copying of this document in whole or in part without the written permission of Jacobs constitutes an infringement of copyright. Limitation: This drawing has been prepared on behalf of, and for the exclusive use of Jacobs' Client, and is subject to, and issued in accordance with, the provisions of the contract between Jacobs and the Client. Jacobs accepts no liability or responsibility whatsoever for, or in respect of, any use of, or reliance upon, this drawing by any third party. © Crown copyright and database rights 2024 Ordnance Survey 10018341. Contains public sector information licensed under the Open Government Licence v3.0.



5



Area Map 2

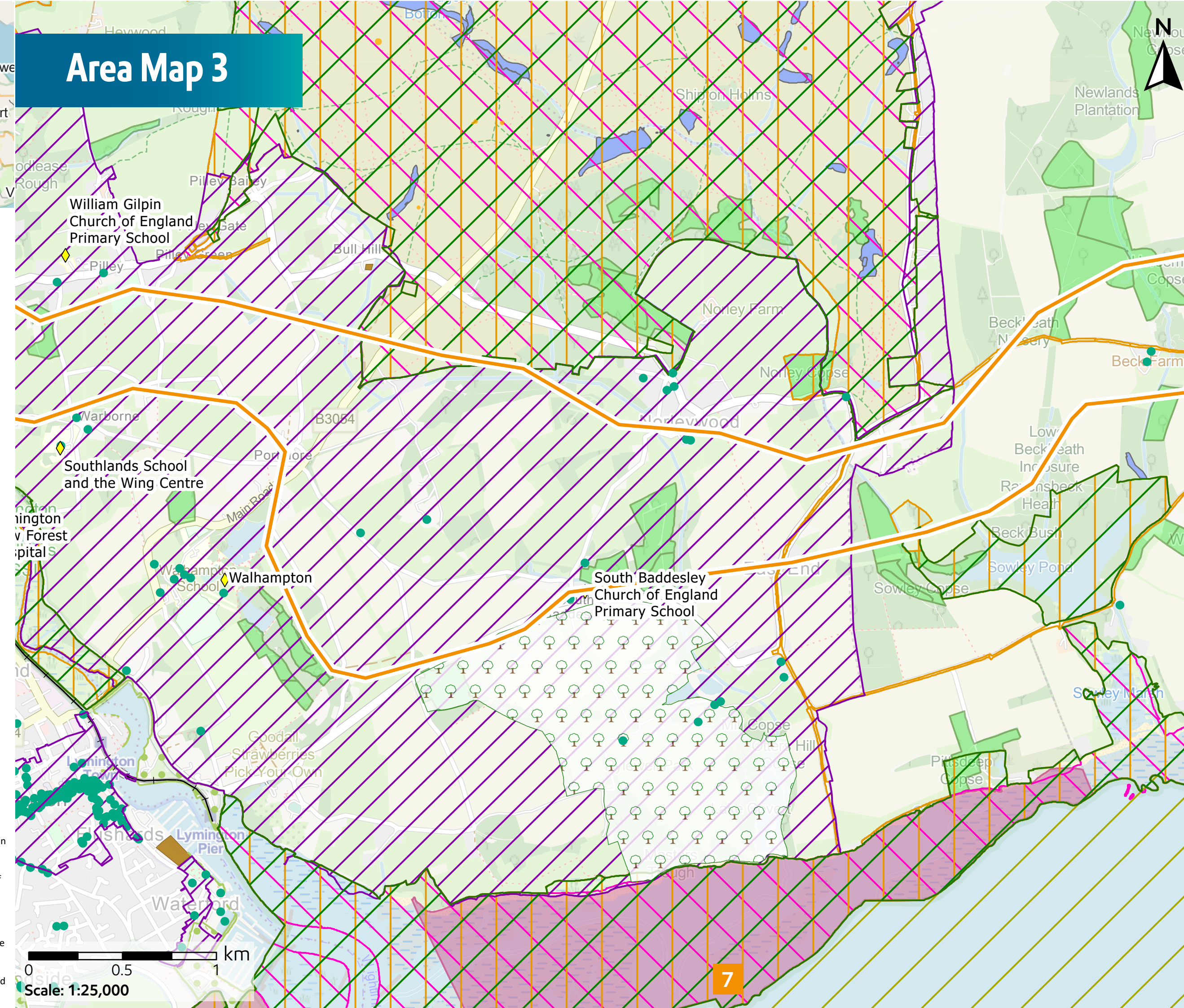


- Legend**
- Listed Building
 - Railway
 - ▬ Scheduled Monuments
 - ⊞ Registered Parks and Gardens
 - ▨ Ramsar Site
 - ▭ Conservation Areas
 - ▭ Sites of Special Scientific Interest (SSSI)
 - ▨ Special Protection Areas (SPA)
 - ▨ Special Areas of Conservation (SAC)
 - ▭ National Nature Reserve (NNR)
 - ▨ Marine Conservation Zones (MCZ)
 - Historic Landfill Sites
 - Ancient Woodland
 - Coastal sand dunes
 - Lowland fens
- Consultation Corridors**
- ▬ Mainland
 - ▬ Isle of Wight North to West
 - ▬ Isle of Wight North to South

* This is part of all three proposed corridors.
Area Map 2 of 12

© Copyright 2024 Jacobs U.K. Limited. The concepts and information contained in this document are the property of Jacobs. Use or copying of this document in whole or in part without the written permission of Jacobs constitutes an infringement of copyright. Limitation: This drawing has been prepared on behalf of, and for the exclusive use of Jacobs' Client, and is subject to, and issued in accordance with, the provisions of the contract between Jacobs and the Client. Jacobs accepts no liability or responsibility whatsoever for, or in respect of, any use of, or reliance upon, this drawing by any third party. © Crown copyright and database rights 2024 Ordnance Survey 10018341. Contains public sector information licensed under the Open Government Licence v3.0.

Area Map 3

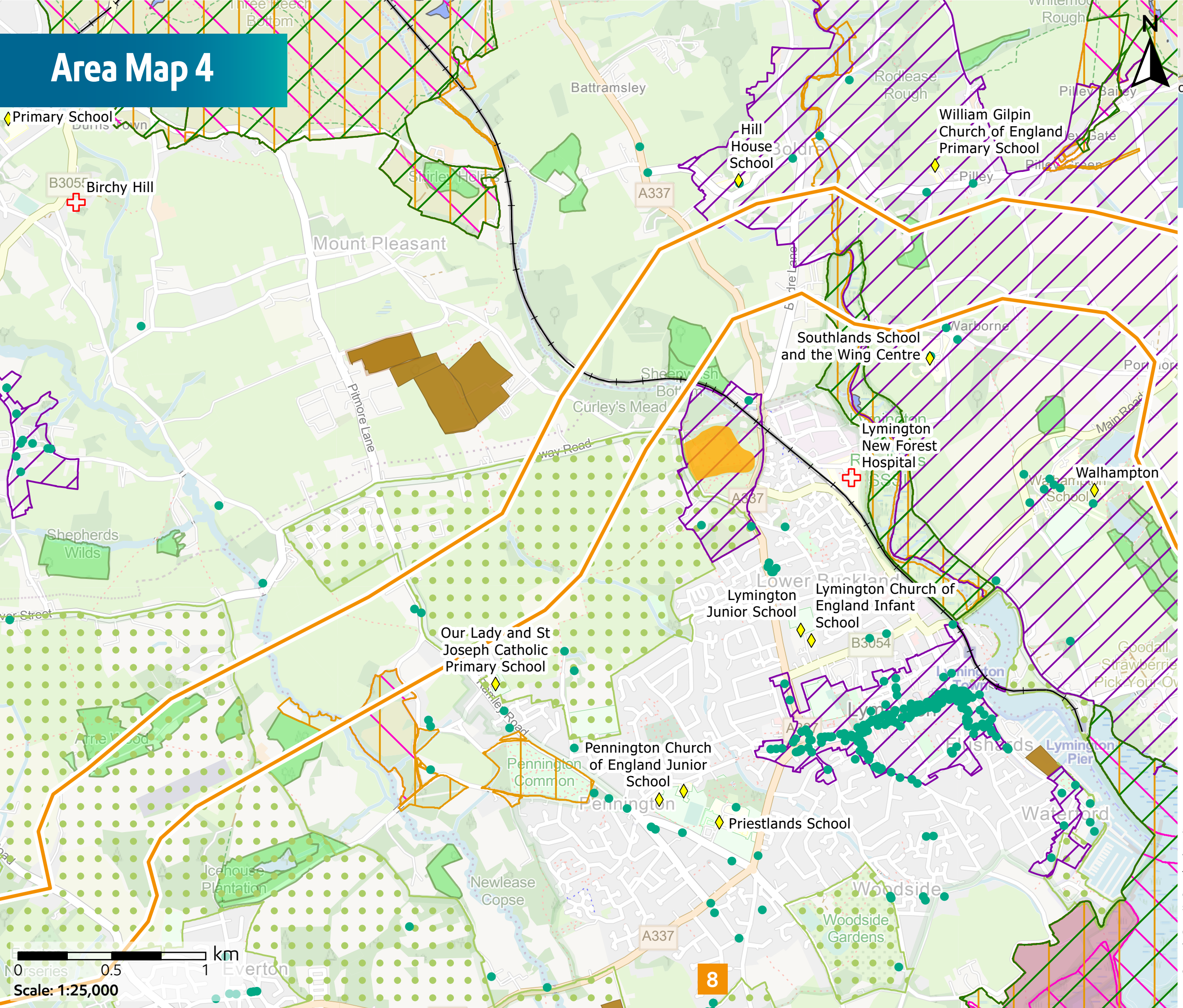


- Legend**
- ◆ Education Facility - School
 - ⊕ Hospital
 - Listed Building
 - Railway
 - ▬ Scheduled Monuments
 - ⊞ Registered Parks and Gardens
 - ▨ Ramsar Site
 - ▭ Conservation Areas
 - ▭ Sites of Special Scientific Interest (SSSI)
 - ▨ Special Protection Areas (SPA)
 - ▨ Special Areas of Conservation (SAC)
 - ▨ Marine Conservation Zones (MCZ)
 - Green Belt
 - Historic Landfill Sites
 - Local Nature Reserve (LNR)
 - Ancient Woodland
 - Coastal sand dunes
 - Lowland fens
- Consultation Corridors**
- ▬ Mainland
 - ▬ Isle of Wight North to West
 - ▬ Isle of Wight North to South

* This is part of all three proposed corridors.
Area Map 3 of 12

© Copyright 2024 Jacobs U.K. Limited. The concepts and information contained in this document are the property of Jacobs. Use or copying of this document in whole or in part without the written permission of Jacobs constitutes an infringement of copyright. Limitation: This drawing has been prepared on behalf of, and for the exclusive use of Jacobs' Client, and is subject to, and issued in accordance with, the provisions of the contract between Jacobs and the Client. Jacobs accepts no liability or responsibility whatsoever for, or in respect of, any use of, or reliance upon, this drawing by any third party. © Crown copyright and database rights 2024 Ordnance Survey 10018341. Contains public sector information licensed under the Open Government Licence v3.0.

Area Map 4

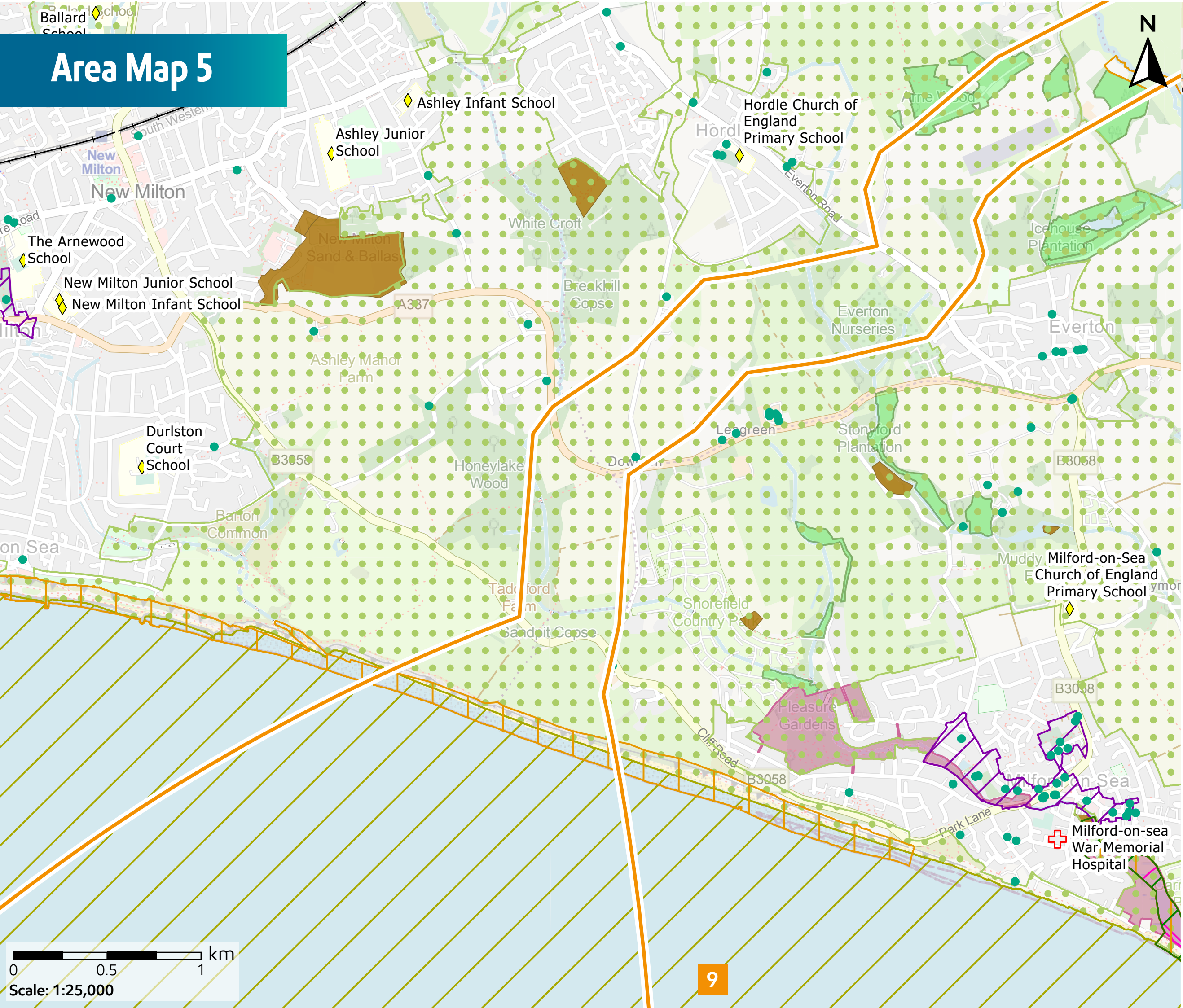


- Legend**
- ♦ Education Facility - School
 - ⊕ Hospital
 - Listed Building
 - Railway
 - ▭ Scheduled Monuments
 - ▭ Ramsar Site
 - ▭ Conservation Areas
 - ▭ Sites of Special Scientific Interest (SSSI)
 - ▭ Special Protection Areas (SPA)
 - ▭ Special Areas of Conservation (SAC)
 - ▭ Marine Conservation Zones (MCZ)
 - ▭ Green Belt
 - ▭ Historic Landfill Sites
 - ▭ Permitted Waste Sites
 - ▭ Local Nature Reserve (LNR)
 - ▭ Ancient Woodland
 - ▭ Coastal sand dunes
 - ▭ Lowland fens
- Consultation Corridors**
- Mainland
 - Isle of Wight North to West
 - Isle of Wight North to South

* This is part of all three proposed corridors.
Area Map 4 of 12

© Copyright 2024 Jacobs U.K. Limited. The concepts and information contained in this document are the property of Jacobs. Use or copying of this document in whole or in part without the written permission of Jacobs constitutes an infringement of copyright. Limitation: This drawing has been prepared on behalf of, and for the exclusive use of Jacobs' Client, and is subject to, and issued in accordance with, the provisions of the contract between Jacobs and the Client. Jacobs accepts no liability or responsibility whatsoever for, or in respect of, any use of, or reliance upon, this drawing by any third party. © Crown copyright and database rights 2024 Ordnance Survey 10018341. Contains public sector information licensed under the Open Government Licence v3.0.

Area Map 5

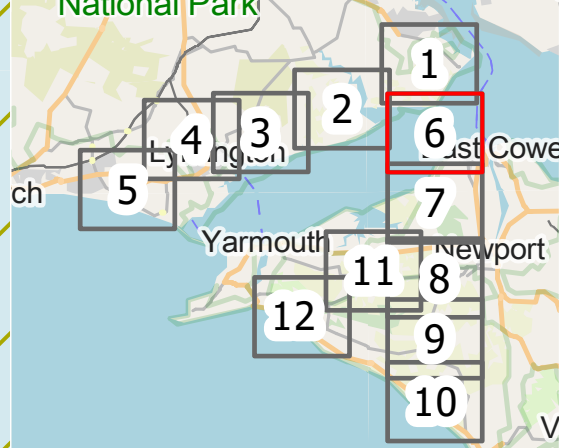
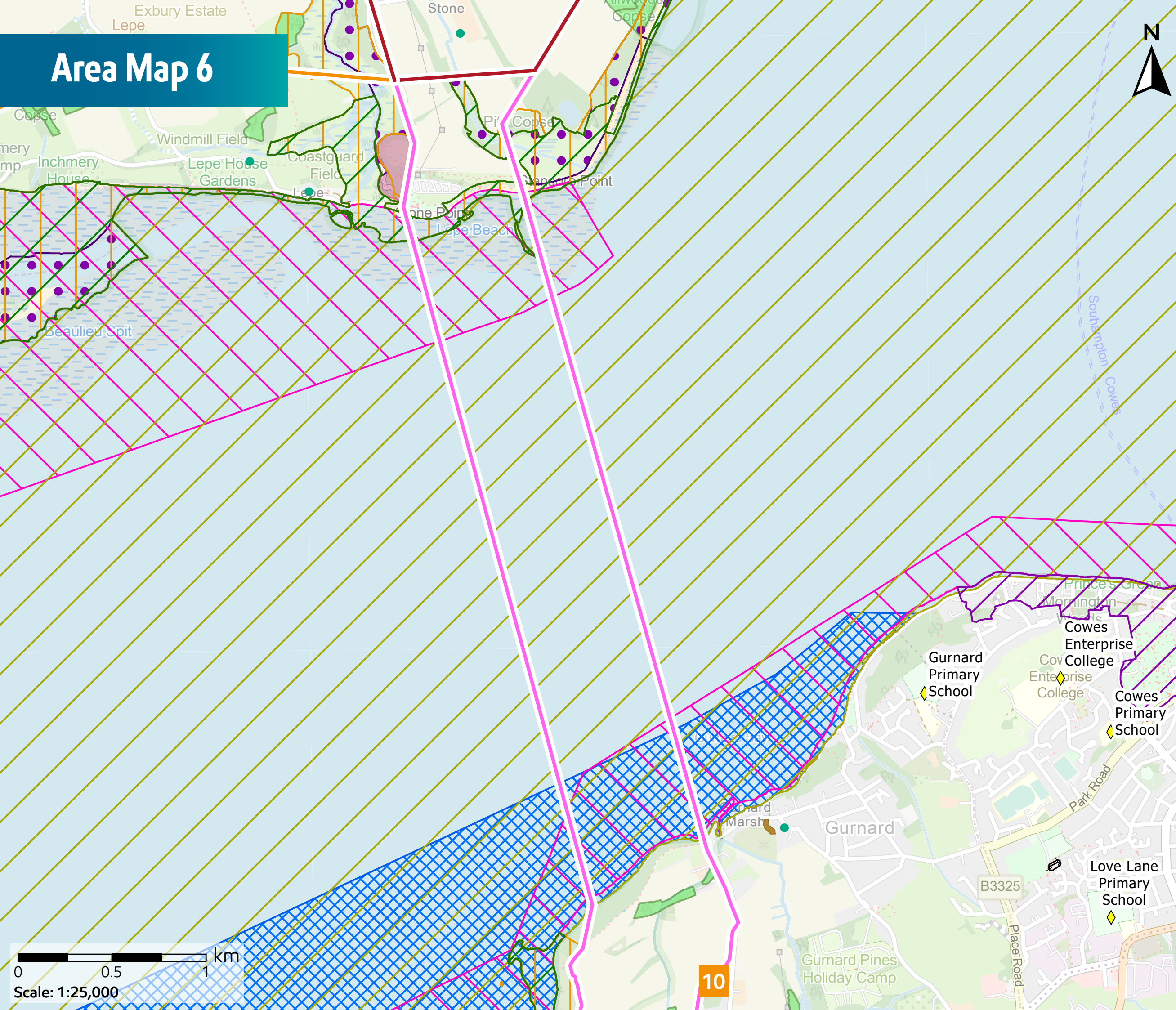


- Legend**
- ♦ Education Facility - School
 - ⊕ Hospital
 - Listed Building
 - Railway
 - ▭ Ramsar Site
 - ▭ Conservation Areas
 - ▭ Sites of Special Scientific Interest (SSSI)
 - ▭ Special Protection Areas (SPA)
 - ▭ Special Areas of Conservation (SAC)
 - ▭ Marine Conservation Zones (MCZ)
 - ▭ Green Belt
 - ▭ Historic Landfill Sites
 - ▭ Local Nature Reserve (LNR)
 - ▭ Ancient Woodland
 - ▭ Coastal sand dunes
 - ▭ Lowland fens
- Consultation Corridors**
- Mainland
 - Isle of Wight North to West
 - Isle of Wight North to South

* This is part of all three proposed corridors.
Area Map 5 of 12

© Copyright 2024 Jacobs U.K. Limited. The concepts and information contained in this document are the property of Jacobs. Use or copying of this document in whole or in part without the written permission of Jacobs constitutes an infringement of copyright. Limitation: This drawing has been prepared on behalf of, and for the exclusive use of Jacobs' Client, and is subject to, and issued in accordance with, the provisions of the contract between Jacobs and the Client. Jacobs accepts no liability or responsibility whatsoever for, or in respect of, any use of, or reliance upon, this drawing by any third party. © Crown copyright and database rights 2024 Ordnance Survey 10018341. Contains public sector information licensed under the Open Government Licence v3.0.

Area Map 6

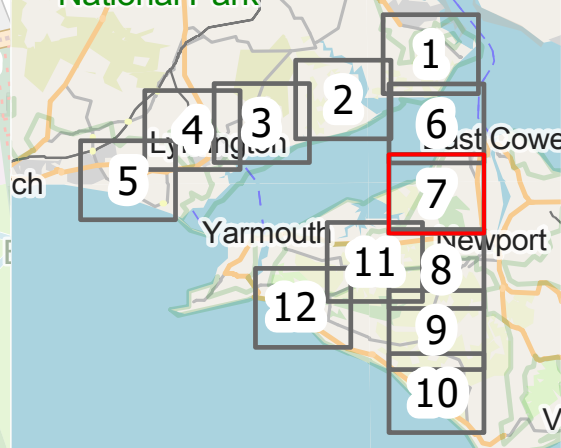
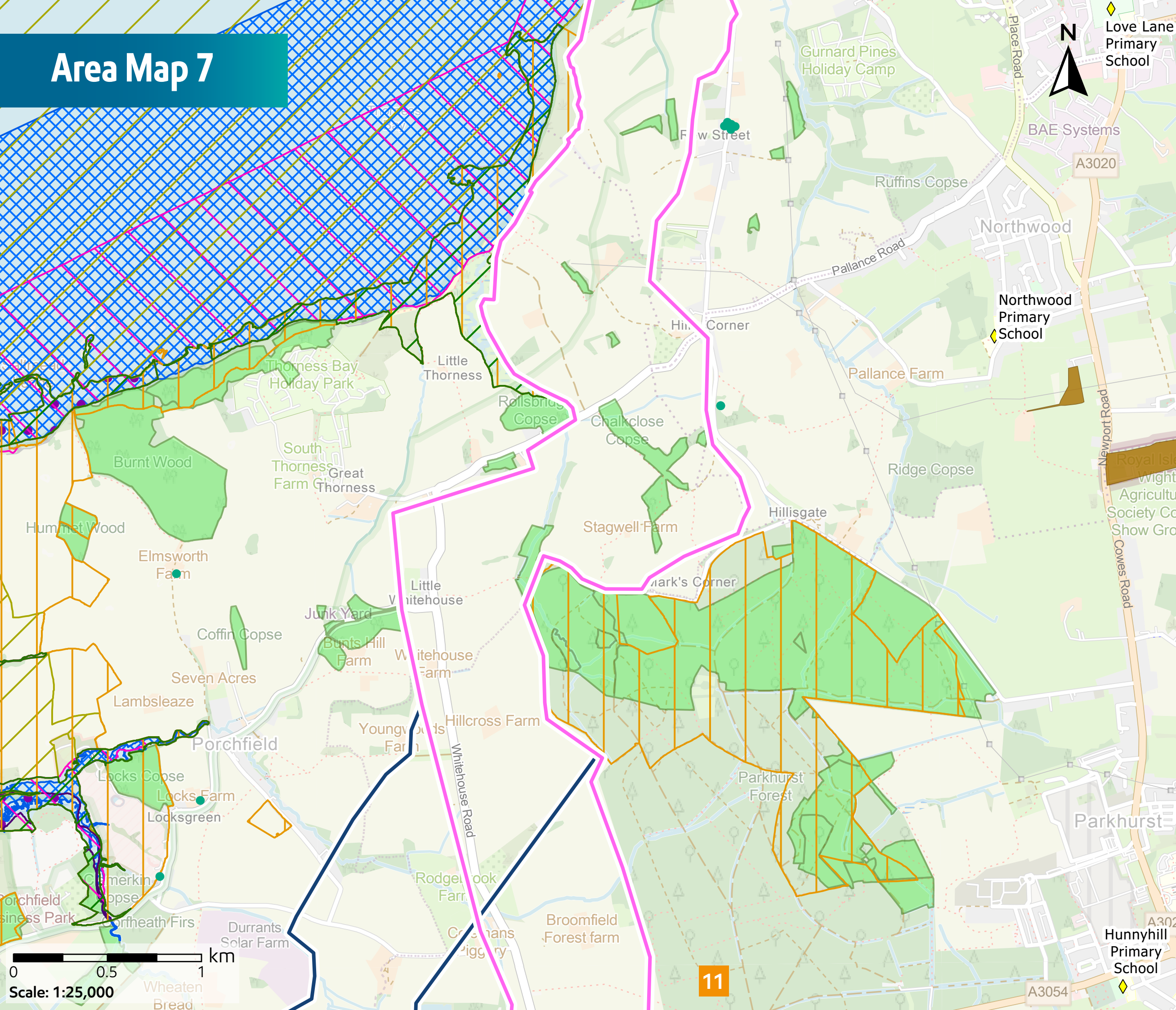


- Legend**
- ◆ Education Facility - School
 - Listed Building
 - Railway
 - Ramsar Site
 - Conservation Areas
 - Sites of Special Scientific Interest (SSSI)
 - Special Protection Areas (SPA)
 - Special Areas of Conservation (SAC)
 - National Nature Reserve (NNR)
 - Marine Conservation Zones (MCZ)
 - Historic Landfill Sites
 - Ancient Woodland
 - Coastal sand dunes
 - Lowland fens
- Consultation Corridors**
- Lepe corridor element*
 - Mainland
 - Isle of Wight North to West
 - Isle of Wight North to South

* This is part of all three proposed corridors.
Area Map 6 of 12

© Copyright 2024 Jacobs U.K. Limited. The concepts and information contained in this document are the property of Jacobs. Use or copying of this document in whole or in part without the written permission of Jacobs constitutes an infringement of copyright. Limitation: This drawing has been prepared on behalf of, and for the exclusive use of Jacobs' Client, and is subject to, and issued in accordance with, the provisions of the contract between Jacobs and the Client. Jacobs accepts no liability or responsibility whatsoever for, or in respect of, any use of, or reliance upon, this drawing by any third party. © Crown copyright and database rights 2024 Ordnance Survey 10018341. Contains public sector information licensed under the Open Government Licence v3.0.

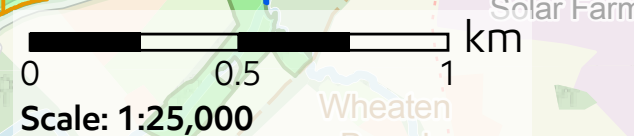
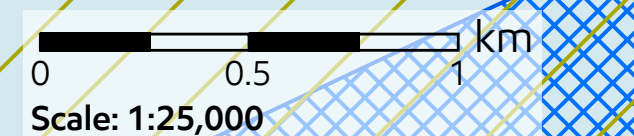
Area Map 7



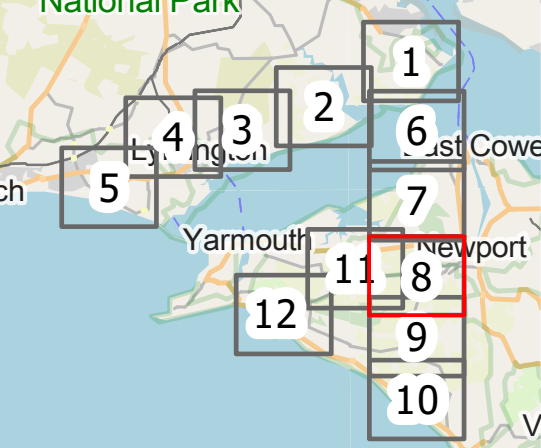
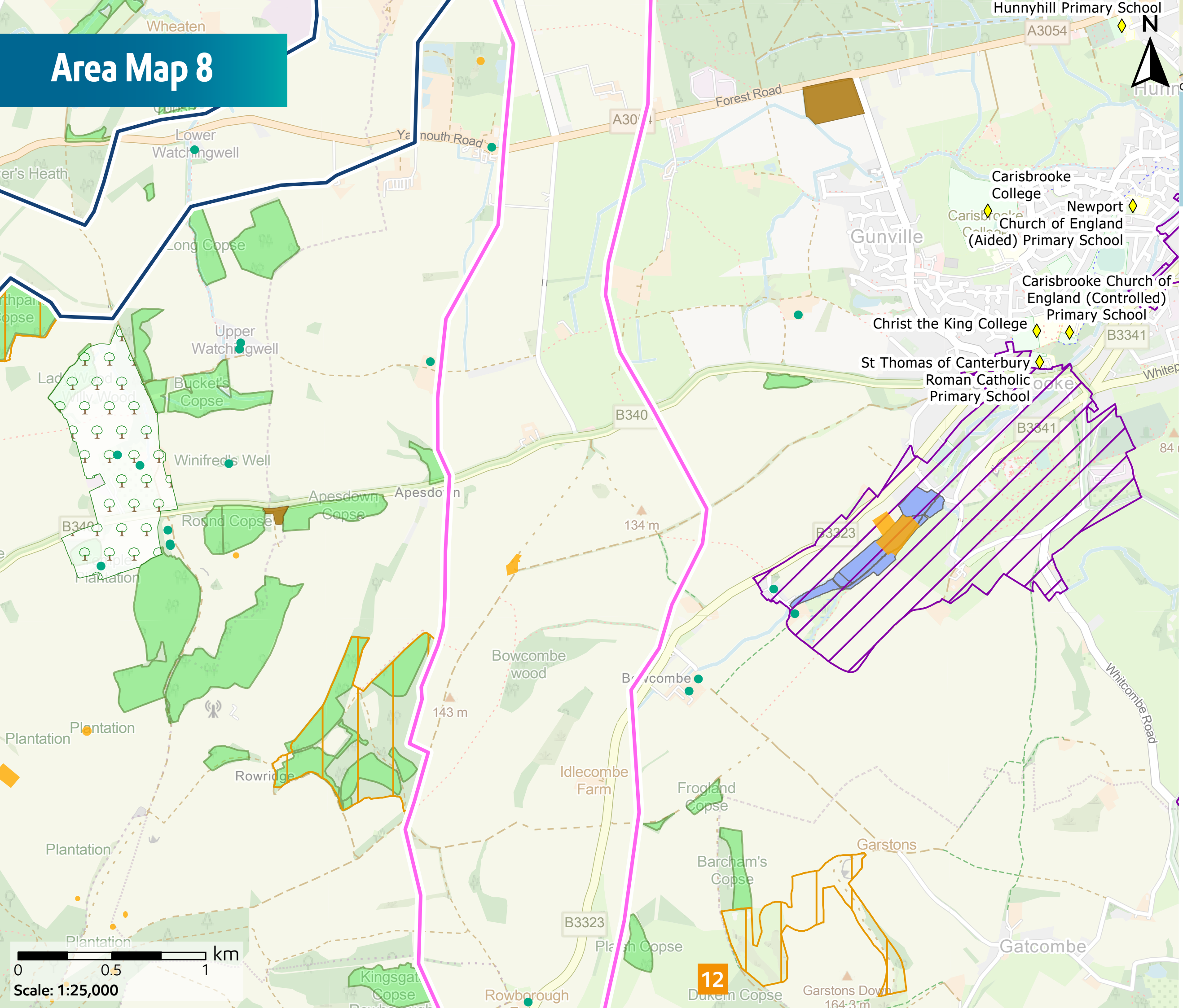
- Legend**
- ◆ Education Facility - School
 - Listed Building
 - Ramsar Site
 - Conservation Areas
 - Sites of Special Scientific Interest (SSSI)
 - Special Protection Areas (SPA)
 - Special Areas of Conservation (SAC)
 - National Nature Reserve (NNR)
 - Marine Conservation Zones (MCZ)
 - Historic Landfill Sites
 - Ancient Woodland
 - Coastal sand dunes
 - Lowland fens
- Consultation Corridors**
- Mainland
 - Isle of Wight North to West
 - Isle of Wight North to South

* This is part of all three proposed corridors.
Area Map 7 of 12

© Copyright 2024 Jacobs U.K. Limited. The concepts and information contained in this document are the property of Jacobs. Use or copying of this document in whole or in part without the written permission of Jacobs constitutes an infringement of copyright. Limitation: This drawing has been prepared on behalf of, and for the exclusive use of Jacobs' Client, and is subject to, and issued in accordance with, the provisions of the contract between Jacobs and the Client. Jacobs accepts no liability or responsibility whatsoever for, or in respect of, any use of, or reliance upon, this drawing by any third party. © Crown copyright and database rights 2024 Ordnance Survey 10018341. Contains public sector information licensed under the Open Government Licence v3.0.



Area Map 8

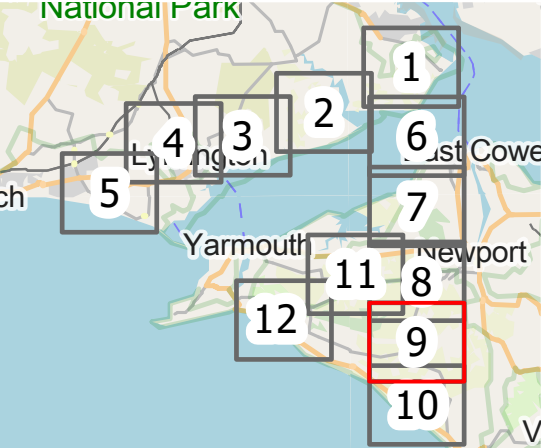
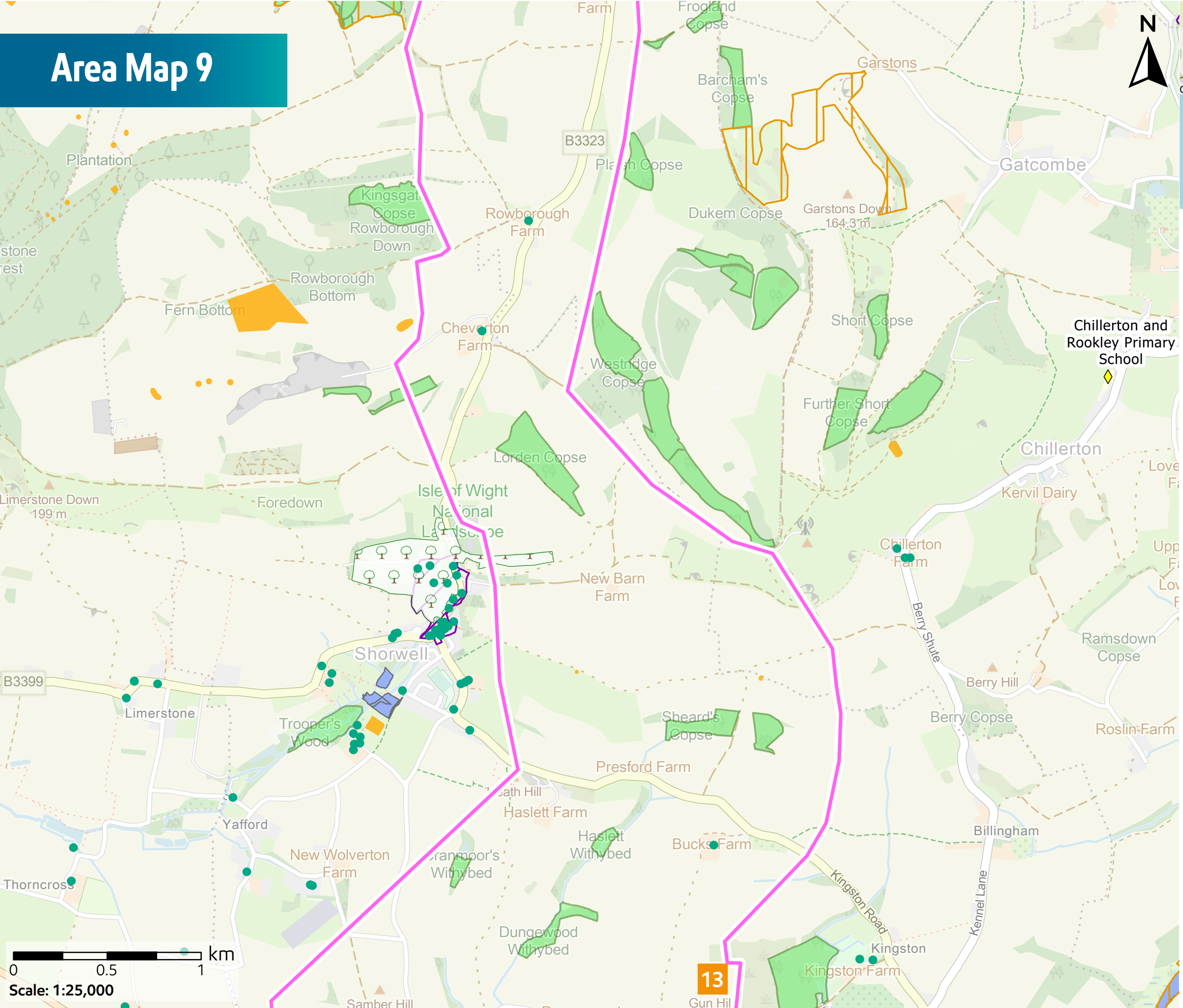


- Legend**
- ◆ Education Facility - School
 - Listed Building
 - Scheduled Monuments
 - ▭ Registered Parks and Gardens
 - ▭ Conservation Areas
 - ▭ Sites of Special Scientific Interest (SSSI)
 - ▭ Marine Conservation Zones (MCZ)
 - Historic Landfill Sites
 - Ancient Woodland
 - Coastal sand dunes
 - Lowland fens
- Consultation Corridors**
- Mainland
 - Isle of Wight North to West
 - Isle of Wight North to South

* This is part of all three proposed corridors.
Area Map 8 of 12

© Copyright 2024 Jacobs U.K. Limited. The concepts and information contained in this document are the property of Jacobs. Use or copying of this document in whole or in part without the written permission of Jacobs constitutes an infringement of copyright. Limitation: This drawing has been prepared on behalf of, and for the exclusive use of Jacobs' Client, and is subject to, and issued in accordance with, the provisions of the contract between Jacobs and the Client. Jacobs accepts no liability or responsibility whatsoever for, or in respect of, any use of, or reliance upon, this drawing by any third party. © Crown copyright and database rights 2024 Ordnance Survey 10018341. Contains public sector information licensed under the Open Government Licence v3.0.

Area Map 9

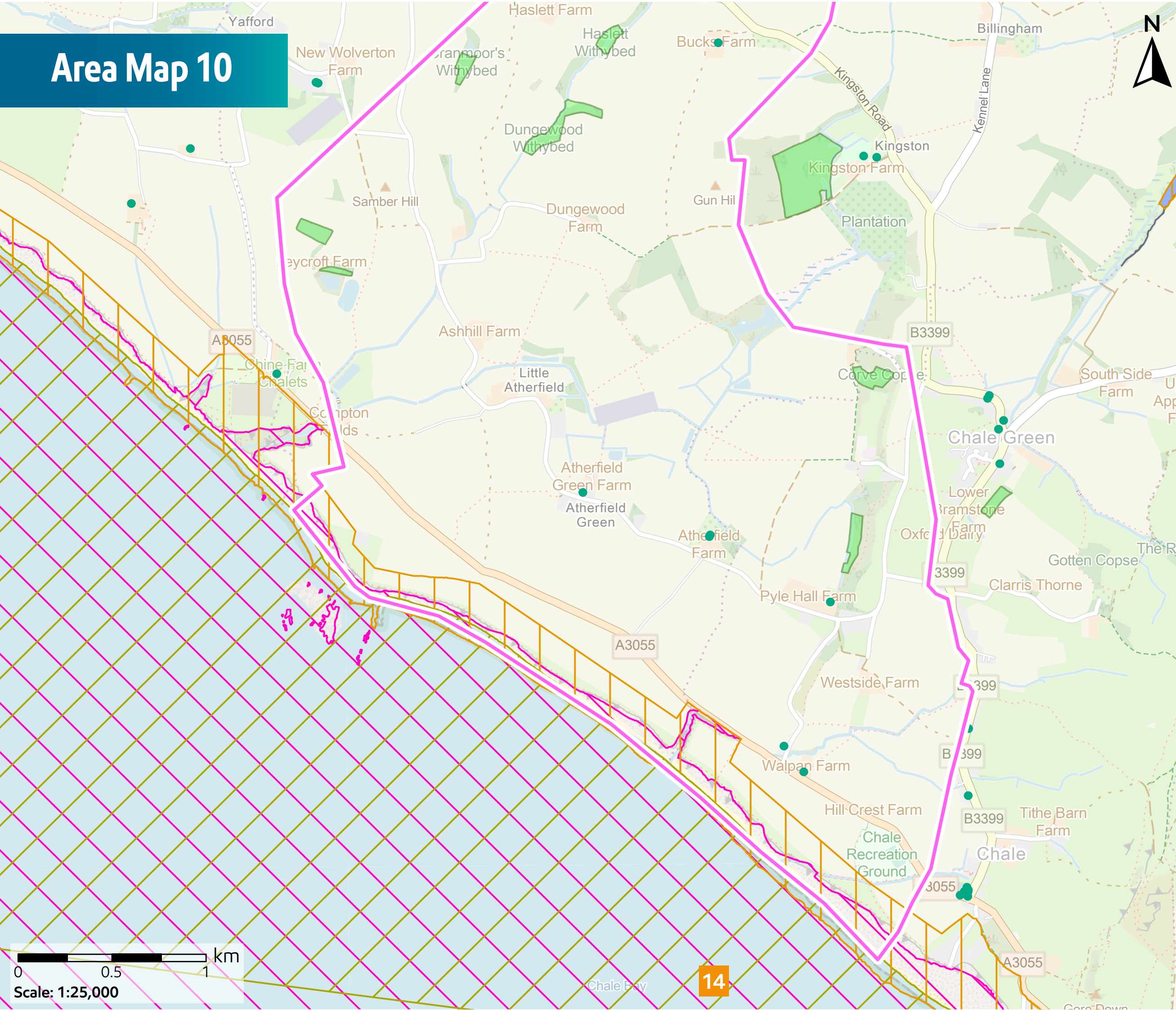


- Legend**
- ◆ Education Facility - School
 - Listed Building
 - Scheduled Monuments
 - ▭ Registered Parks and Gardens
 - ▭ Conservation Areas
 - ▭ Sites of Special Scientific Interest (SSSI)
 - ▭ Marine Conservation Zones (MCZ)
 - Permitted Waste Sites
 - Ancient Woodland
 - Coastal sand dunes
 - Lowland fens
- Consultation Corridors**
- Mainland
 - Isle of Wight North to West
 - Isle of Wight North to South

* This is part of all three proposed corridors.
Area Map 9 of 12

© Copyright 2024 Jacobs U.K. Limited. The concepts and information contained in this document are the property of Jacobs. Use or copying of this document in whole or in part without the written permission of Jacobs constitutes an infringement of copyright. Limitation: This drawing has been prepared on behalf of, and for the exclusive use of Jacobs' Client, and is subject to, and issued in accordance with, the provisions of the contract between Jacobs and the Client. Jacobs accepts no liability or responsibility whatsoever for, or in respect of, any use of, or reliance upon, this drawing by any third party. © Crown copyright and database rights 2024 Ordnance Survey 10018341. Contains public sector information licensed under the Open Government Licence v3.0.

Area Map 10

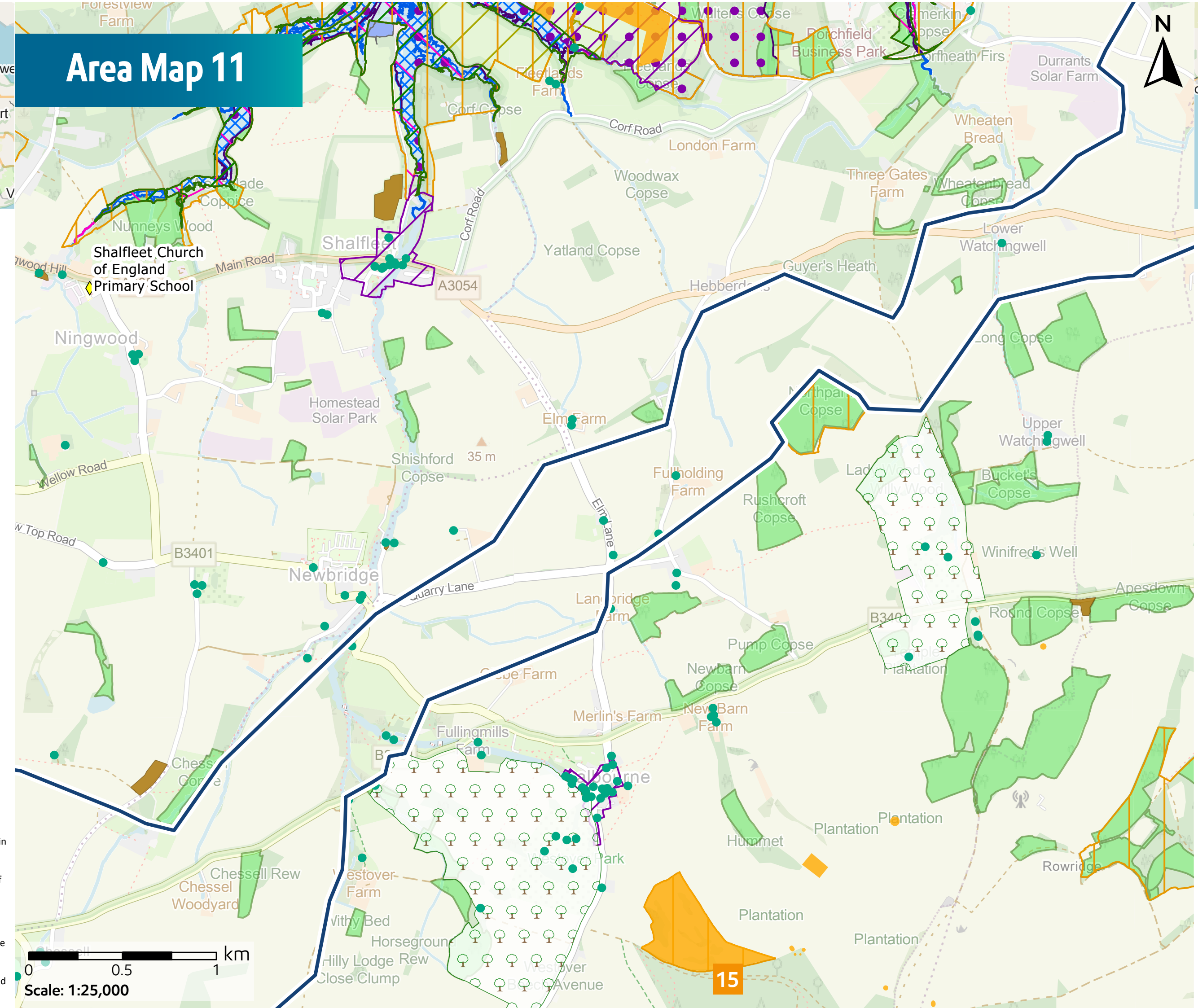


- Legend**
- Listed Building
 - Conservation Areas
 - Sites of Special Scientific Interest (SSSI)
 - Special Protection Areas (SPA)
 - Special Areas of Conservation (SAC)
 - Marine Conservation Zones (MCZ)
 - Ancient Woodland
 - Coastal sand dunes
 - Lowland fens
- Consultation Corridors**
- Mainland
 - Isle of Wight North to West
 - Isle of Wight North to South

* This is part of all three proposed corridors.
Area Map 10 of

© Copyright 2024 Jacobs U.K. Limited. The concepts and information contained in this document are the property of Jacobs. Use or copying of this document in whole or in part without the written permission of Jacobs constitutes an infringement of copyright. Limitation: This drawing has been prepared on behalf of, and for the exclusive use of Jacobs' Client, and is subject to, and issued in accordance with, the provisions of the contract between Jacobs and the Client. Jacobs accepts no liability or responsibility whatsoever for, or in respect of, any use of, or reliance upon, this drawing by any third party. © Crown copyright and database rights 2024 Ordnance Survey 10018341. Contains public sector information licensed under the Open Government Licence v3.0.

Area Map 11

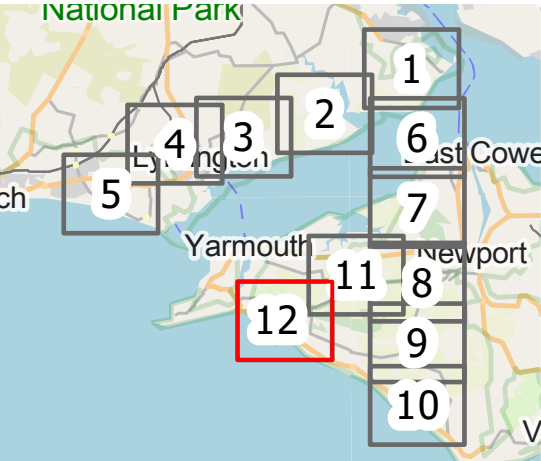
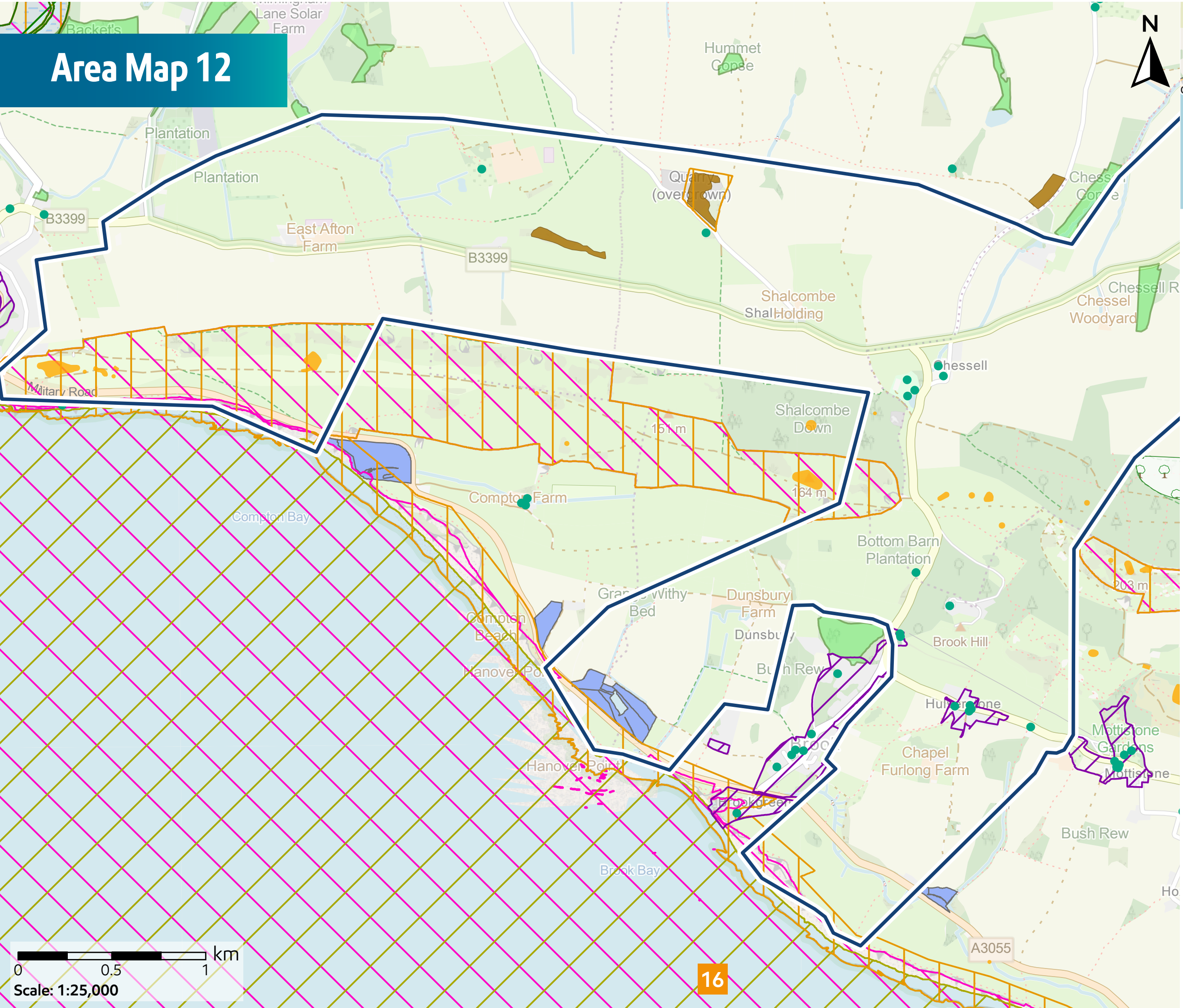


- Legend**
- Education Facility - School
 - Listed Building
 - Scheduled Monuments
 - Registered Parks and Gardens
 - Ramsar Site
 - Conservation Areas
 - Sites of Special Scientific Interest (SSSI)
 - Special Protection Areas (SPA)
 - Special Areas of Conservation (SAC)
 - National Nature Reserve (NNR)
 - Marine Conservation Zones (MCZ)
 - Historic Landfill Sites
 - Ancient Woodland
 - Coastal sand dunes
 - Lowland fens
- Consultation Corridors**
- Mainland
 - Isle of Wight North to West
 - Isle of Wight North to South

* This is part of all three proposed corridors.
Area Map 11 of

© Copyright 2024 Jacobs U.K. Limited. The concepts and information contained in this document are the property of Jacobs. Use or copying of this document in whole or in part without the written permission of Jacobs constitutes an infringement of copyright. Limitation: This drawing has been prepared on behalf of, and for the exclusive use of Jacobs' Client, and is subject to, and issued in accordance with, the provisions of the contract between Jacobs and the Client. Jacobs accepts no liability or responsibility whatsoever for, or in respect of, any use of, or reliance upon, this drawing by any third party. © Crown copyright and database rights 2024 Ordnance Survey 10018341. Contains public sector information licensed under the Open Government Licence v3.0.

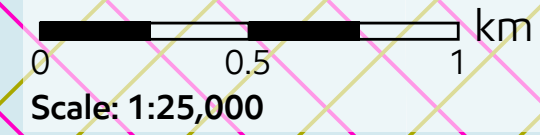
Area Map 12



- Legend**
- Listed Building
 - Scheduled Monuments
 - Registered Parks and Gardens
 - Ramsar Site
 - Conservation Areas
 - Sites of Special Scientific Interest (SSSI)
 - Special Protection Areas (SPA)
 - Special Areas of Conservation (SAC)
 - Marine Conservation Zones (MCZ)
 - Historic Landfill Sites
 - Local Nature Reserve (LNR)
 - Ancient Woodland
 - Coastal sand dunes
 - Lowland fens
- Consultation Corridors**
- Mainland
 - Isle of Wight North to West
 - Isle of Wight North to South

* This is part of all three proposed corridors.
Area Map 12 of

© Copyright 2024 Jacobs U.K. Limited. The concepts and information contained in this document are the property of Jacobs. Use or copying of this document in whole or in part without the written permission of Jacobs constitutes an infringement of copyright.
 Limitation: This drawing has been prepared on behalf of, and for the exclusive use of Jacobs' Client, and is subject to, and issued in accordance with, the provisions of the contract between Jacobs and the Client. Jacobs accepts no liability or responsibility whatsoever for, or in respect of, any use of, or reliance upon, this drawing by any third party. © Crown copyright and database rights 2024 Ordnance Survey 10018341. Contains public sector information licensed under the Open Government Licence v3.0.



ExxonMobil